

Smart Taps



Information for customers and dealers

blanco.co.uk

BLANCO
GERMANY

Welcome to the future
of mixer taps.

New BLANCO Smart Taps.



Perfect mixer taps.
 Unique features.
 Smart solutions.
 New Smart Taps from BLANCO.



Welcome to the future of kitchen taps! BLANCO is entering a new era with our innovative range of Smart Taps. The smart product range is geared towards highly specific uses within the kitchen. To put it another way, each of the four Smart Taps helps to make life a little easier.

The BLANCO EVOL-S Volume is impressive because of its exact measuring function, ensuring accurate water volume. There's no need to wait around for the water to boil with the BLANCO TAMPERA Hot: it's been engineered to be better. With its integrated limescale-reducing filter, the BLANCO FONTAS-S II Filter promises superior water quality and the unique feature of separate filtered and mains water in one pull-out spout. You can taste the superior quality of the water.

And then there's the BLANCO SOLENTA-S Senso with its integrated motion sensor for touchless water flow, operating the mixer tap is easy, even when your hands are full.

Four modern, future-proof mixer taps that provide ideal solutions for everyday use in the kitchen. Four distinctive designs of outstanding quality that demand a place in your kitchen. **It doesn't get smarter than that.**



Smart inventions.
Features for your lifestyle.
Countless applications.
Smart Taps make life a little easier.



BLANCO EVOL-S Volume
Exactly the right amount of water, every time. The integrated measuring function and touch control make it simply smart.



BLANCO FONTAS-S II Filter
A five-stage filter ensures the purest of water. The pull-out spout makes all the difference.



BLANCO TAMPERA Hot
Boiling, filtered, taste-free water in an instant. A hot water system that is engineered to be better, as standard.



BLANCO SOLENTA-S Senso
Control the water with a wave of your hand, or pot, or pan. This professional tap just got a promotion.





Perfection is everything working precisely.

The EVOL-S Volume from BLANCO, thanks to its integrated measuring function, always provides exactly the amount of water that you need. Set your required quantity using the rotary control and get precisely that amount of water with intuitive touch-button operation. Whether you're preparing pizza dough, mixing jelly or filling the kettle, the EVOL-S Volume is the perfect Smart Tap when precision is key. The right amount of water in your fitness shakes, the perfect amount of water for that culinary masterpiece or exactly the right amount of water for a baby's formula mix – to name a few.

Another plus is that using a specific amount of water puts an end to unnecessary water wastage, making this mixer tap economical and environmentally friendly. The new dynamic flow control system provides intelligent control of the water flow: the greater the amount of water you want, the more powerful the jet and the faster the water flow. This means no unnecessary waiting.

EVOL-S Volume is available in chrome and Stainless finish UltraResist® to match your sink or bowl perfectly.

Superbly measured.
Superbly precise.
Superb idea.

The precise amount of water each time with the BLANCO EVOL-S Volume.



Easy to set.
One-touch.
Millilitre precision.



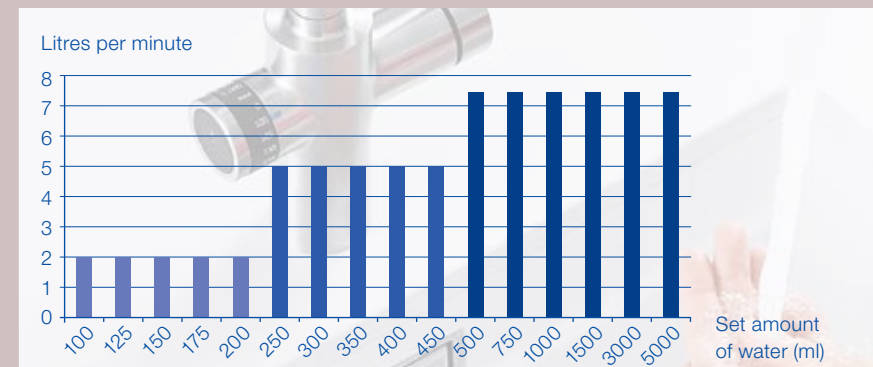
Use the rotary dial to set the exact amount of water that you want delivered in small increments from 100ml to 5 litres.



Intuitive touch control: Tap on the touch control button and the set amount of water comes out of the mixer tap.



Use the second lever to mix cold and warm water in the usual way.



Dynamic Flow Control: The more water you need, the faster it flows through the system. When you need less water, you'll probably be using a smaller vessel – so the flow rate is reduced to avoid splash-back. Smart stuff.



In a high-quality metal finish, the pull-out spout gives you more freedom of movement around the sink.

For precise recipes.
 For attention to detail.
 For the water conscious.



You'll always have the exact volume of water that you need, even if it's the smallest amount, e.g. when making ice cubes or ice lollies.



Superbly measured. Superbly precise. Superb pizza dough.



Your chia seed pudding will come out perfectly thanks to the integrated measuring function.



The EVOL-S Volume allows you to set the amount of water exactly. No more, and no less. Use just what you need.



Keeping everyone happy, the rotary measuring function lets you set the amount of water precisely.



Economical and environmentally friendly: no more water wastage or overflowing the kettle, thanks to exact water consumption.

You use your kitchen tap more than any other piece of equipment in your kitchen. With the BLANCO EVOL-S Volume you can widen the possibilities of this kitchen hero. More than just mixing cold and warm, you can run exactly the amount that you need at any given moment. Precise, perfect and in a contemporary design. One small step for mankind, a big step towards perfecting the kitchen.



Set the volume.
Tap the button.
Precise delivery.

BLANCO EVOL-S Volume,
Stainless finish UltraResist®.



BLANCO EVOL-S Volume,
Stainless finish UltraResist®.



Whether you want to make fresh tea, brew some coffee, blanch vegetables or fill up your hot-water bottle, without a boiling water tap, you just have to wait. Not with the smart BLANCO TAMPERA Hot 3-in-1 tap. Cold, warm and instant boiling water from a single mixer tap. Smart stuff.

Having boiling water on-tap without having to wait is a real advantage and saves valuable time. The mixer tap is controlled via a separate hot water rotary knob with a safety catch. After every use, the rotary knob springs straight back to the original position, ensuring maximum safety.

As you would expect from BLANCO, everything about the TAMPERA Hot tap is quality. From the filtered water quality to the build quality, from the expertly engineered tank and system to the digital control feature. The boiling water comes from a 4 litre-capacity hot water boiler made of extremely resistant, taste-neutral, hygienic titanium. The water in the boiler is heated to 105°C to ensure that bacteria and germs are thoroughly eliminated.

Before heating, the water is purified with a high-quality BWT five-stage filter. The filter reduces limescale and contaminants, leaving the water perfectly PH balanced, improving both the water quality and the taste. In addition, the mixer tap also dispenses warm and cold unfiltered water in the normal way. Filtered, boiling, taste-free water, from a child-safe tap and an ultra-safe titanium boiler, as standard. There aren't lots of additional, optional extras as with many other hot taps, it's simply been engineered to be better from the start.

The hot water system does require a little cupboard space, but has been designed to work perfectly in combination with the BLANCO SELECT Compact 60/2 waste management system.

The BLANCO TAMPERA Hot – a cool, smart innovation that makes everyday life a little easier.



Instant boiling water.
100°C filtered.
Engineered to be better.
Introducing the new TAMPERA Hot.
Everything you need, as standard.



A press and turn safety button.
An insulated spout that stays cool.
Reassuringly child-safe.



Hot



Safe even for little ones: hot water flows only when safety button is pressed and the rotary is turned at the same time.



Safety first: as soon as you release the rotary knob, it springs straight back to the original position and the water stops flowing.



The insulated spout and the concentrated, low-spray flow of aerated water protect your hands.



The 3-in-1 mixer tap with a rotary knob for boiling hot water and a mixer lever for warm and cold water.



The smart mixer tap can be retrofitted into existing kitchens. The titanium boiler and filter are hidden away in the base cabinet.



The system offers enough room to combine it with the BLANCO SELECT Compact 60/2 waste management system.



Time saving.
Water saving.
Space saving.



Tea on tap: the water in the hot water boiler is heated to a constant 105°C and comes out of the mixer tap at almost 100°C.



Get your coffee fix without having to wait – made possible by the TAMPERA Hot from the Smart Tap range.



Blanch vegetables in an instant – the boiling water comes out of a hot water boiler made of super-strong and hygienic titanium.



No need to wait around for delicious food: cook noodles, quinoa or fill a saucepan the easy way thanks boiling water on demand.



A concentrated, aerated boiling water flow to reduce spray and protect your hands.

Is waiting around for the kettle to boil really necessary in this day and age? Be smart and save yourself all that. The TAMPERA Hot will give you valuable extra space on your worktop, not to mention freeing up precious time for the important things in life.

Smart benefits at a glance:

- Up to 2.5 litres of boiling hot, filtered water instantly
- Resistant titanium boiler with a total 4-litre capacity
- Power consumption in operating mode: 2,100 W
- Energy-efficient: Power consumption in stand-by mode approx. 16 W
- Includes top-quality BWT multi-stage filter
- Flowmeter with real-time filter capacity display
- Heating time when boiler has just been filled: approx. 15 minutes

It's hot stuff up above. The hard work happens down below.

The TAMPERA Hot tap features a lot of advanced technology as standard, working away in the background.

Included within the plumbing assembly kit is a vertical expansion joint (See component A below) that must be fitted as per the instructions. This additional height should be allowed for in the installation and could impact the position of a wall waste outlet.



The titanium boiler is vertically mounted on the floor of the cabinet and can also be retrofitted into your kitchen.

High-tech in the cabinet: Future-proof technology is hidden away in your cabinet so that you can get hot water straight away from your BLANCO Smart mixer tap. The high-pressure boiler is made of top-quality titanium. This high-grade material is corrosion-resistant and taste-neutral, which is important because it is constantly heating water to 105°C. This high temperature within the boiler ensures that the water is boiling hot when it comes out of the mixer tap. It contains around 2.5 litres of boiling hot water, ready for use. Engineered to be better.

There is enough space in the cabinet for a waste management system: combining it with the BLANCO SELECT Compact 60/2 is ideal as it allows you to make the most of the remaining space.



The BWT multi-stage filter is easy to replace: simply unscrew the old filter and screw in the new one. Done.

Hot water now tastes better than ever with the BWT multi-stage filter: before heating, this innovative, high-performance filter purifies mains water five times, getting rid of minute particles that affect the taste, whilst also protecting the system from limescale and other contaminants. The integrated activated carbon filter reduces the chlorine content, giving the boiling hot water an even better taste. The high-performance ion exchanger reduces heavy metals that could contaminate your hot water, significantly reducing the water hardness. This protects the high-quality titanium boiler from deposits, so your morning tea or coffee will never again be marred by traces of limescale. Importantly, the filter doesn't remove too much calcium as this would adversely affect the taste of the water. Instead, the water is left perfectly BH balanced and tasting great.

The result: the BLANCO TAMPERA Hot transforms standard hot water into delicious soft, freshly boiled drinking water of the very highest quality. Engineered to be better.



The Flowmeter display shows you how much water the filter is still able to purify and descale, in the form of a countdown.

To ensure that you know when to change the filter, the BLANCO Flowmeter is built into the system and measures precisely how much water is actually flowing through the filter. The Flowmeter will show the filter's exact remaining capacity. That way, you can be sure that you are getting the best out of the filter.

If the filter needs to be changed, the Flowmeter will warn you in good time by sounding a signal. A filter will typically supply 2700 litres of water before needing to be changed, however, this volume may be reduced if you live in a hard-water area. The Flowmeter also gives you a warning if its batteries need to be changed. This gives you complete peace of mind when getting boiling water. The Flowmeter automatically lets you know if the system needs something.



Why choose the BLANCO TAMPERA Hot?



It's quite simple really.

Instant, beautifully filtered, 100°C boiling water at the twist of a child-safe lever from an ultra-safe, super-hygienic and taste-free titanium boiler, delivered through an insulated spout that doesn't get hot.

We have developed the TAMPERA Hot to give you all the time, energy and space-saving benefits of a hot tap, but without lots of optional extras and with none of the worry. As you would expect from BLANCO, it's engineered to be better.

Still not convinced?

- A **titanium high-pressure boiler**, not a copper or stainless steel tank like many others; makes our system stronger, more hygienic and the water taste-free
- Unlike other hot taps, the TAMPERA Hot comes with a **five-stage filtration system as standard** – not as an optional extra – to ensure the purest water and protect the system
- The system includes a fool-proof **digital Flowmeter** that audibly alerts you when it is time to change the filter, as standard
- On average it takes three minutes to boil a kettle and we tend to boil them at least five times a day for hot drinks and food preparation – the TAMPERA Hot delivers **100°C boiling water instantly**.

Save time



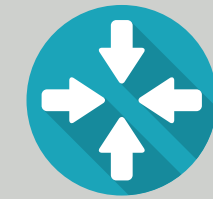
It's instant. Turn the lever and out pours 100°C filtered water, no need to wait for the kettle to boil, no need to bring the pan to the boil before adding your pasta or vegetables (unless you are boiling potatoes, in which case always start them in cold water and bring to the boil, obviously). We're not suggesting you're the type of person to watch a kettle boil, no-doubt you make good use of those minutes, checking emails, social media, rustling up an omelette – that sort of thing. What we are suggesting is that now, you can do all those things already armed with a freshly made coffee.

Save water



Do you always overfill the kettle? Everyone does. We end up pouring the excess away because boiling it again makes tea taste a bit funny. No need with the TAMPERA Hot, simply pour the exact amount of boiling water that you need for the number of cups you are making or pans you're filling. Other savings include those times you need hot water to rinse a plate or soak a dish, you may have to run a standard tap for a while to let the water run hot. There is no waiting with the TAMPERA Hot, so no need to waste a drop of water.

Save space



No more kettle cluttering up your work surface, that space is reclaimed for chopping veggies, kneading dough, baking cakes, building that award-winning science experiment or simply for making more tea. Don't forget about the space under the sink though; now packed with a boiler, filter and a load of pipework, right? Well no actually, the TAMPERA Hot's system has been developed to be as compact as possible, in fact the BLANCO SELECT Compact 60/2 waste separation bin system is designed to operate in the same cupboard space.

100°C filtered



Mains water is purified through a BWT five-stage filtration system. Firstly, the particulate filter removes larger impurities that affect taste, two activated carbon filters remove particles that cause unwanted odors and tastes whilst reducing chlorine content. Then the ion exchanger reduces limescale, balances the PH levels and the mineral content, softening the water. Finally, the fifth stage, a fine particulate filter that captures any stray particles, protecting the system, before the water heads off to be boiled at 105°C in the super-hygienic titanium high-pressure tank.

Titanium tech



The unassuming 4 litre tank is really a technical genius. The high-pressure boiler is made from top-grade titanium that is corrosion resistant, taste-neutral and strong... really strong! It takes the freshly filtered water and keeps it consistently heated to 105°C – this high temperature ensures that hygienic, tasteless, crystal clear boiling water is delivered from the spout, instantly. The performance of the boiler tank is protected and maintained by the five-stage filtration system and the digital Flowmeter ensures your filter is functioning perfectly.

Safety first



Is boiling water from a tap safe? With kids around? Absolutely. What helps is the TAMPERA Hot's rotary control knob with a child-safe lock button that must be pressed whilst simultaneously turning the knob to activate the flow of boiling water. A rotary knob that automatically springs back to the off-position as soon as it is released, stopping the flow instantly. The TAMPERA Hot also features an insulated spout that doesn't get hot when delivering 100°C water in a controlled jet through an aerator that reduces spray to protect your hands.

Engineered to be better.
100°C filtered water on tap.
No need for optional extras.

Peace of mind is when everything
you need comes as standard.





Fresher, cleaner, purer, deliciously filtered.

When you're really thirsty, there's nothing better. And when you're making tea, putting together your own bottled water or making ice cubes, you want to know that you have high-quality water you can rely on.

That's where BLANCO's Smart Taps FONTAS-S II Filter, FONTAS II Filter and TRIMA Filter really come into their own. An integrated BWT multi-stage filter purifies the water, reduces limescale and heavy metal content and thus appreciably enhances the taste. BLANCO filter systems provide warm, cold or filtered cold water.

The two separate control levers for cold and warm water on the one side and the control lever for filtered water on the other side ensures that you always get the type of water that you want.

In addition, the high filtering capacity extends the usage intervals, meaning that the filter cartridges do not have to be changed as often.

The BLANCO FONTAS-S II Filter is the smartest filter tap available, its pull-out spout delivers warm and cold flow PLUS filtered water via separate pipe and nozzle. This spout allows flexible use around the sink, making it easy to fill household appliances like your kettle or coffee machine reservoir with filtered water. A fresh solution that tastes great.

Filtered water.
A better taste.
The perfect solution.
The BLANCO five-stage filter
makes water delicious.



Tastes good.
Looks good.
Feels great.
BLANCO FONTAS II range.



Filtered and unfiltered tap water flows completely separately through the pipes and the spout. There's no risk of them getting mixed together.



On the one side you get filtered, purified water, and on the other unfiltered warm and cold mains water.



FONTAS-S II: the only filter mixer tap with a pull-out spout, providing plenty of room for manoeuvre around the sink.

For coffee aficionados.
For tea connoisseurs.
For water lovers.



One thing is clear: water with less calcium content simply tastes better.



Limescale-reduced water from the FONTAS-S II Filter is also good news for your coffee machine.



The BWT multi-stage filter gives a clear taste improvement, even for ice cubes.



Whether you love tea, coffee or water, you can taste the superb quality of the limescale-reduced water.



No more single-use plastic water bottles: thanks to the FONTAS-S II Filter, purified tap water makes a smart alternative.

BLANCO's filtering systems reduce not only the limescale content, but also the amount of heavy metals and chlorine. Plain old tap water is transformed into deliciously purified, fresh drinking water. Your body will thank you. No more flakes in your cup of tea. Limescale build-up in coffee machines, kettles and other kitchen appliances is also massively reduced. BLANCO FONTAS-S II Filter, FONTAS II Filter and TRIMA Filter: Smart solutions to enrich your kitchen experience.

Filtered water.
Refined taste.
BLANCO TRIMA Filter.



Filter Taps from BLANCO improve your drinking water and help you preserve the environment. The use of water filter taps not only remove a majority of calcium carbonate from the water, but other harmful toxins and chemicals are filtered out too, ensuring you have the freshest water available.

More importantly, buying bottled water is not only expensive, but the manufacture of and disposal of the single use plastic containers is also incredibly harmful to the environment.

In the UK, we use over 7 billion single-use plastic water bottles every year. The environmental costs are significant as plastic can take anywhere between 450 and 1,000 years to decompose and is finding its way into the food chain as a result.

A tap like the BLANCO TRIMA Filter and the multi-stage BWT filtration system will change the way you interact with water in your kitchen. The taste is purer, the feeling is softer and the water fresher.



The BLANCO TRIMA Filter tap is controlled with two separate, ergonomic levers.



The main lever, on the right, controls the warm and cold flow.



The small lever on the left controls the freshly filtered cold water.



The TRIMA Filter tap features a multi-stage BWT filter and a digital control system, the BLANCO Flowmeter.

Filtered.
Purified.
Simply delicious.

Better water quality thanks to the multi-stage filtering technology.



The BWT multi-stage filter is easy to replace: simply unscrew the old filter and screw in the new one. Done.

The multi-stage filter from BWT turns mains water into a delight.

This innovative, high-performance filter purifies the water from the mains supply several times, getting rid of minute particles that affect the taste. The integrated activated carbon filter reduces the chlorine content, giving the water an even better taste. The high-performance ion exchanger reduces any heavy metal content contaminating your drinking water. And last but not least, it significantly reduces the water hardness. This means less limescale in coffee machines, kettles and other kitchen appliances, which can extend their lifespan. Limescale build up will no longer spoil your morning tea or coffee. Importantly, the filter doesn't remove too much calcium as this would adversely affect the taste of the water. Instead, the water is left perfectly BH balanced and tasting great.

The result: BLANCO filtered Smart Taps transform standard mains water into deliciously soft, fresh, running drinking water of the very highest quality. Simply delicious.

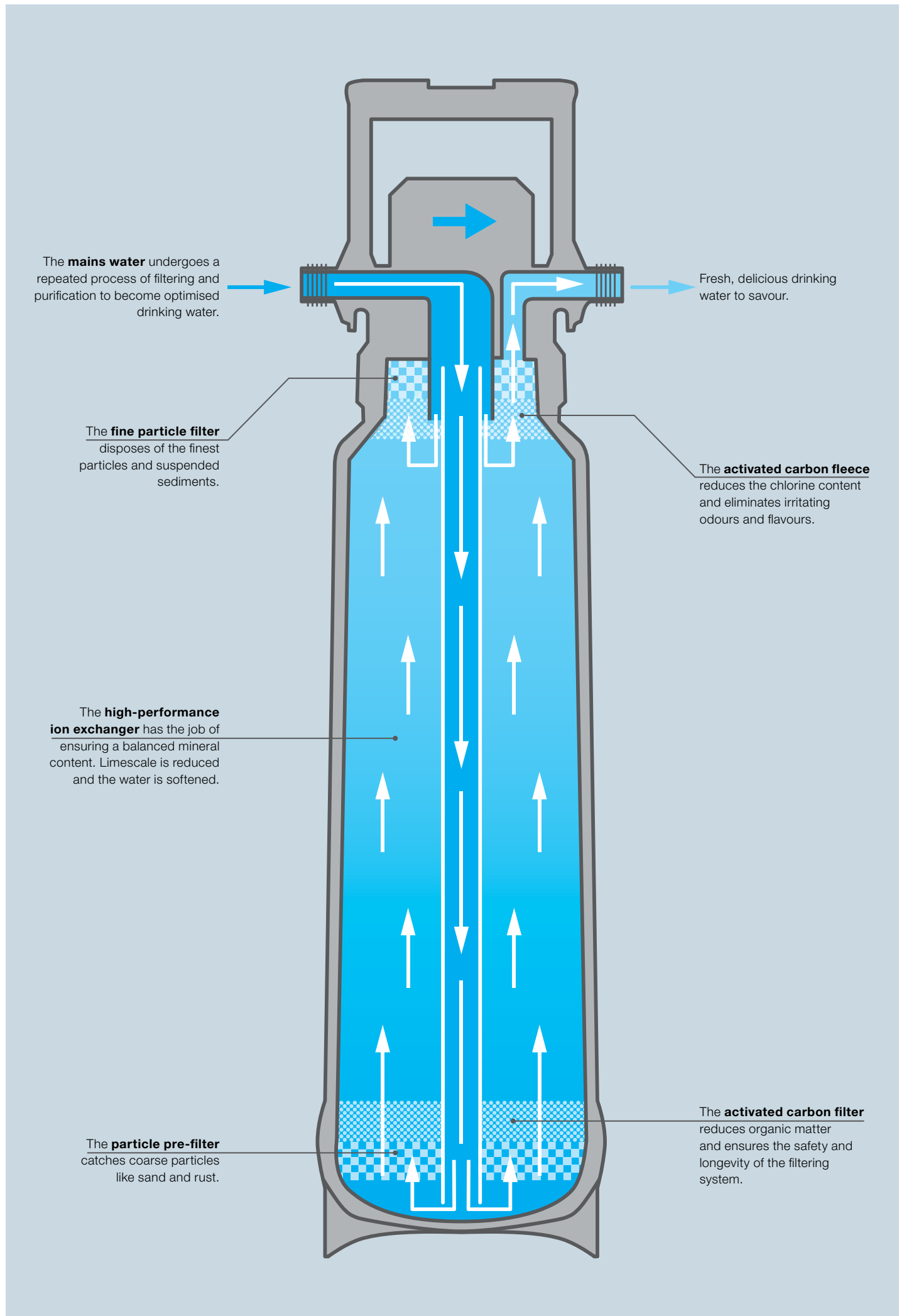
But it's not just delicious and healthy. It also saves you from having to drag heavy bottles of water home from the shops. What's more, you can help the environment by no longer needing single-use plastic bottles. Simply smart.



The Flowmeter display shows you how much water the filter is still able to purify and descale, in the form of a countdown.

To ensure that you always change the filter at exactly the right time, the BLANCO Flowmeter is built into the water pipe for the filter and measures precisely how much water is actually flowing through the filter. The Flowmeter will show the filter's exact remaining capacity, if you live in a hard water area the lifespan of a filter can be reduced as a result of the higher calcium levels in the water. However, with the Flowmeter you can be sure that you are getting the best out of the filter.

If the filter needs to be changed, the Flowmeter will warn you in good time by sounding a signal. It also gives you a warning if its batteries need to be changed to give you complete peace of mind.





Everyone is familiar with the situation of having both hands full in the kitchen, whether you're mixing ingredients for a birthday cake or marinating the chicken; it's just then that you need some water.

The SOLENTA-S Senso from BLANCO has just the smart system to help, and is setting a new standard with its innovative sensor technology and start-stop function. The intelligent motion sensor activates and deactivates the water flow completely touch-free.

The sensor is integrated into the rotating spout arm, giving it a whole new functionality. Meanwhile, the optimal trigger range around the sensor prevents it from being activated unintentionally. This ensures convenient operation, with only a gentle movement required to get the water running, whenever you need it. The blue LED display in the spout arm shows the operating mode. A permanent light indicates stand-by status. If the water is being controlled by the sensor, it flashes.

The flexible hose with its magnetic holder allows you to expand the range of action around the sink with ease. The segmented metal casing prevents any build-up of dirt. In addition, the SOLENTA-S Senso has a top-quality dual spray hose with a switchover function.

And on top of all these plus points, this classy smart mixer tap also saves water. And that means cost savings, too. Plenty of reasons to celebrate, even if you have your hands full.



Full hands.
Running water.
An inspired idea.

Touch-free water: SOLENTA-S Senso
with sensor technology.

Water on.
Water off.
Touch-free.



The sensor is intuitively accessible, turning to wherever you want the water to flow.



The sensor's near field detection function responds to any movement within an ergonomically optimal distance of up to 6cm.



The dual spray hose gives you the choice of a jet spray for washing remnants of food off your dishes, or a wide spray for filling pots.

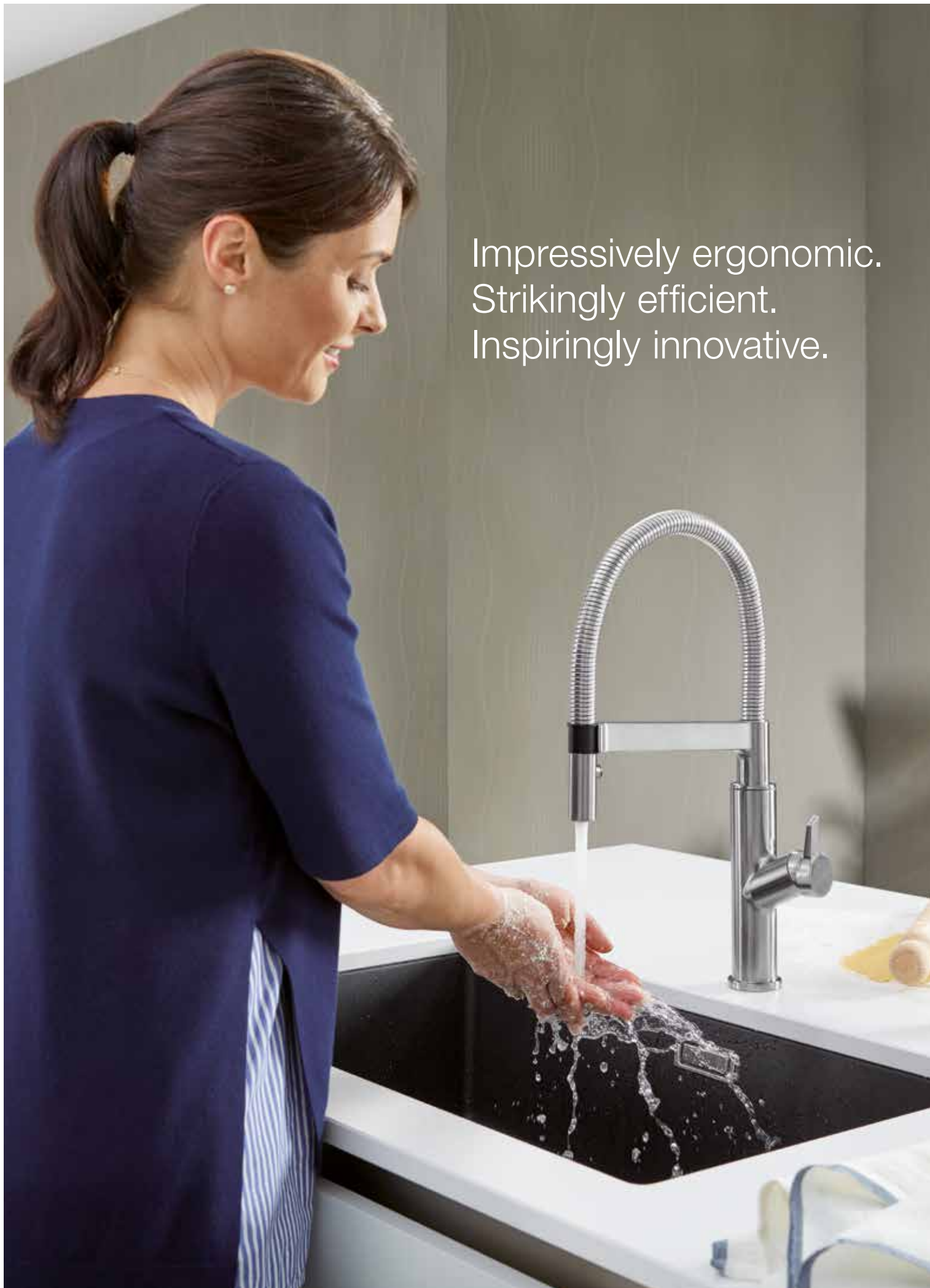


The Stainless finish UltraResist® is particularly easy to clean and scratch-resistant, and does not show fingerprints.



Of course, you can also use the lever to regulate the temperature manually and leave the water running.





Impressively ergonomic.
Strikingly efficient.
Inspiringly innovative.



In the past, everyday kitchen tasks would sometimes leave you wishing you had an extra hand. Today you just need the SOLENTA-S Senso.



Using the SOLENTA-S is child's-play, simply set the water temperature for your peace of mind.

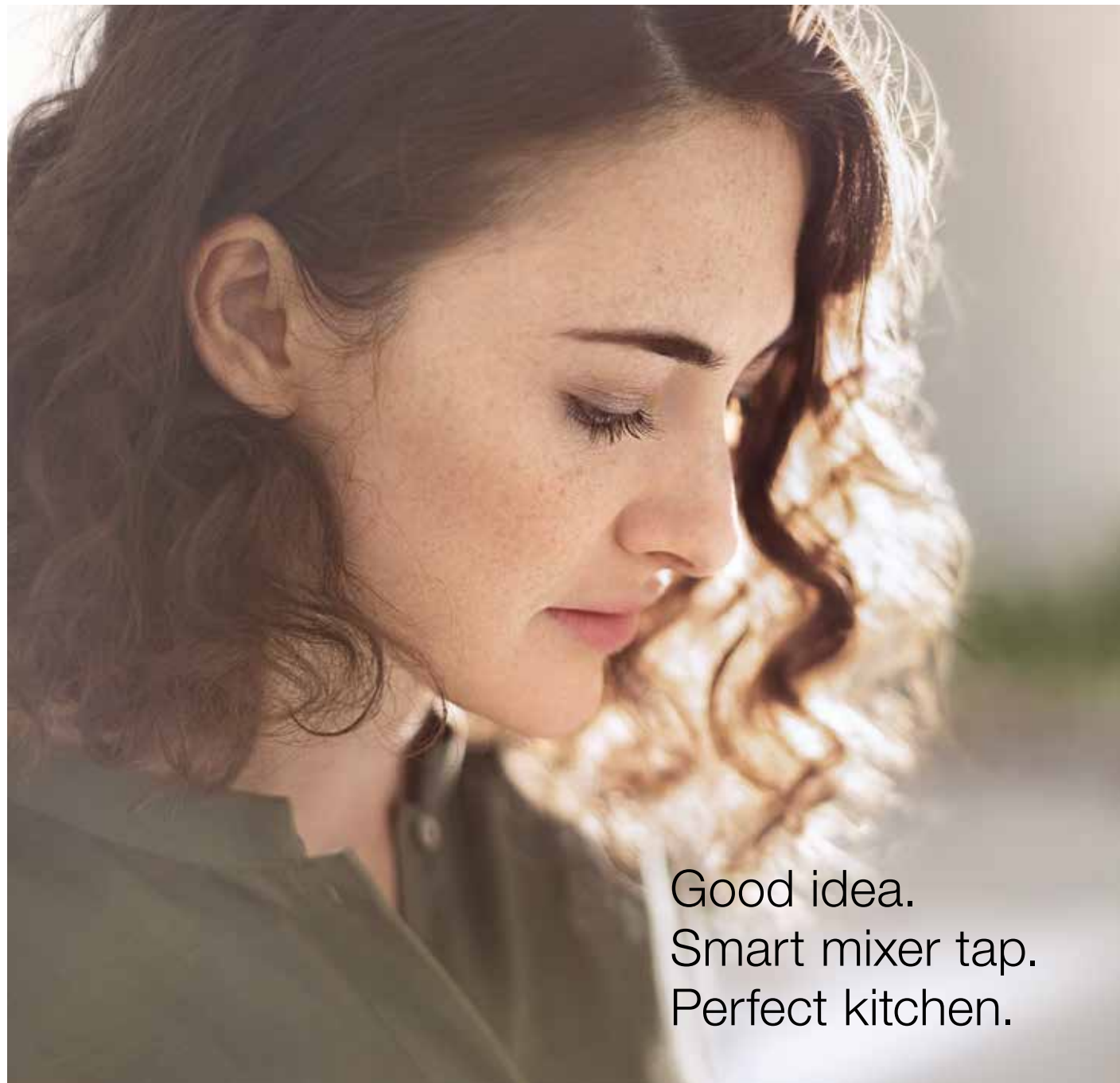


Water is precious. You can start and stop it with complete ease – simply wave your hand.

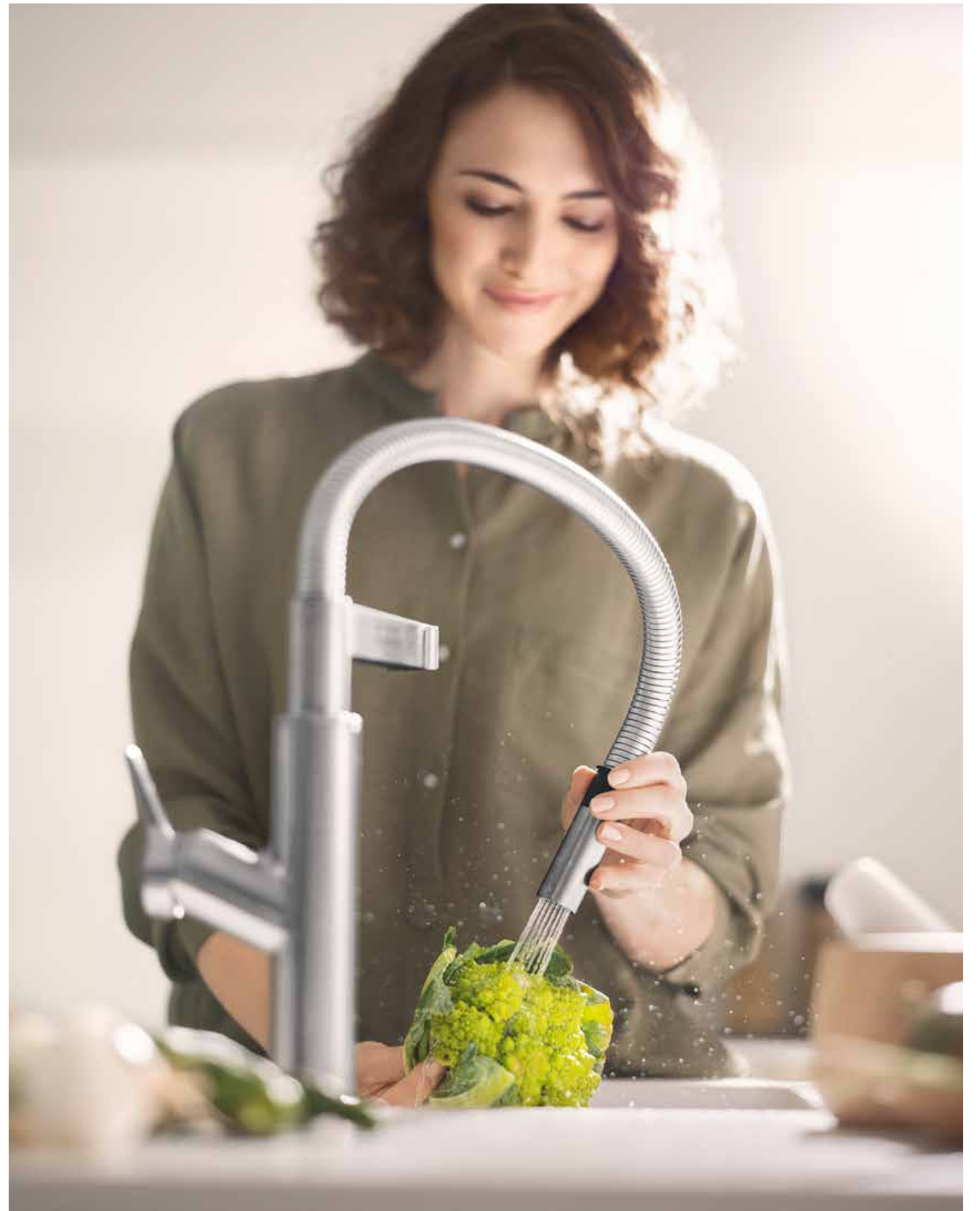


The start-stop function with touchless sensor technology means that you can now prepare meals much more ergonomically and efficiently.

Cooking can be a sheer delight. Flowing water without having to touch anything, thanks to the SOLENTA-S Senso with its innovative start-stop function. There's no need to change hands, put things down or set what you're doing to one side. Instead, you can give your full attention to the essentials.



Good idea.
Smart mixer tap.
Perfect kitchen.



BLANCO UK Limited: If you require further details on our complete range of sinks, taps, cooker hoods, hobs and accessories, please contact your local BLANCO dealer, or telephone direct on 01923 635 200 for details.

Please note that colour references are only as accurate as the printing process will allow. E & OE. Due to a policy of continual product improvement, BLANCO reserves the right to alter specifications and prices without prior notice. ©BLANCO UK Limited (within the UK and Republic of Ireland on behalf of BLANCO GmbH & Co KG) 2019. All rights reserved. Without limiting the rights reserved under copyright reserved above, no part of this publication may be reproduced, stored in or introduced into a retrieval system, or transmitted, in any form by any means (electronic, mechanical, photocopying, recording or otherwise), without the prior written express permission of the copyright owner.

Design and artwork by N9 Design & Production Limited, Nottingham.

BLANCO UK Limited
Tel: 01923 635 200
Fax: 0800 091 1608
Email: info@blanco.co.uk

www.blanco.co.uk

BLANCO UK Limited (Republic of Ireland)
Tel: 1 800 936 800
Fax: 1 800 936 801
Email: info@blanco.co.uk

The logo for BLANCO GERMANY, featuring the word "BLANCO" in a large, bold, blue sans-serif font, with the word "GERMANY" in a smaller, bold, black sans-serif font directly underneath it.